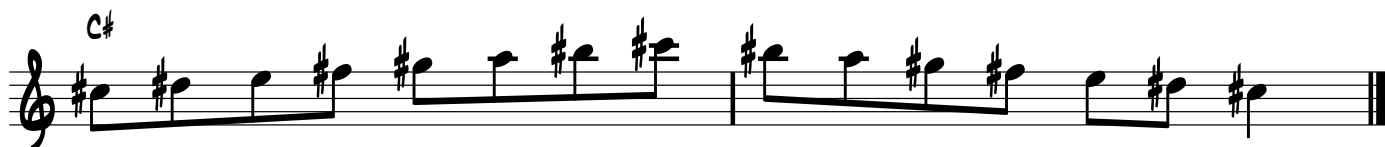
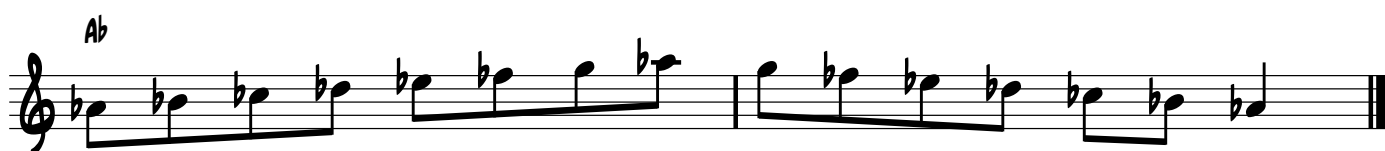


HARMONIC MINOR SCALE SHEET

RANDY HUNTER



The image displays five musical staves, each representing a different harmonic minor scale. Each staff begins with a treble clef and a key signature of one sharp (F#). The scales are:

- F#:** The first staff, labeled 'F#', shows the F# harmonic minor scale: F#-G-A-B-A-B-C-B-A-G-F#.
- B:** The second staff, labeled 'B', shows the B harmonic minor scale: B-C-D-E-D-E-F#-E-D-C-B.
- E:** The third staff, labeled 'E', shows the E harmonic minor scale: E-F#-G-A-B-A-B-C-B-A-G-F#.
- A:** The fourth staff, labeled 'A', shows the A harmonic minor scale: A-B-C-D-E-D-E-F#-E-D-C-B.
- D:** The fifth staff, labeled 'D', shows the D harmonic minor scale: D-E-F#-G-A-B-A-B-C-B-A-G-F#.

LEARN MORE ABOUT THE HARMONIC MINOR SCALE AND OTHER FORMS OF MINOR SCALES USED IN JAZZ IMPROVISATION IN MY LESSON CALLED MINOR TO MINOR: UNDERSTANDING THE SCALES.

AVAILABLE ON THE JAZZ IMPROV LESSONS PAGE OF
WWW.BEGINNINGSAX.COM